

Hypercable

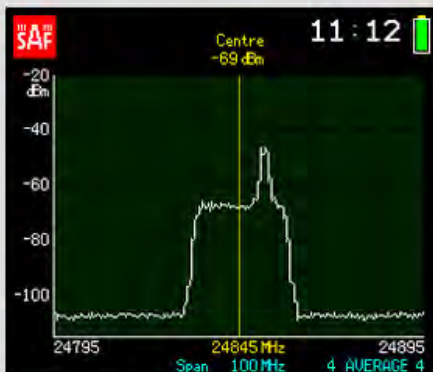


Spectrum Compact

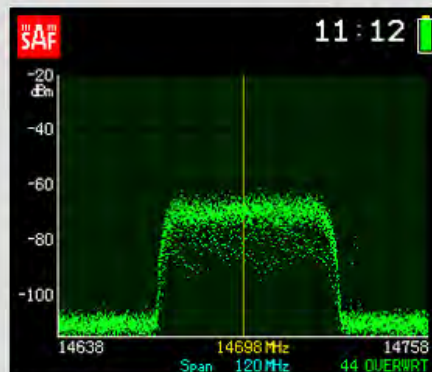
Analyseurs de spectre

www.hypercable.fr

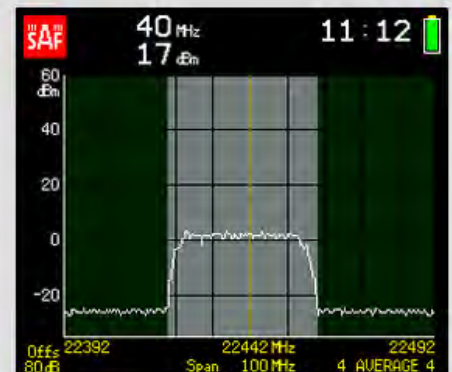
Examples of the signal visual representation



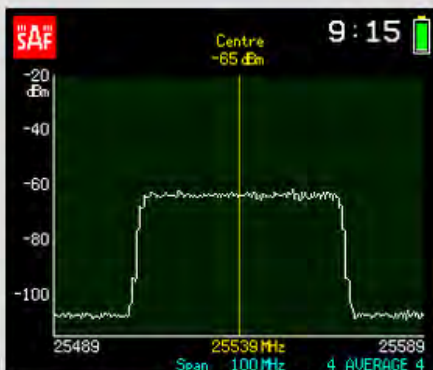
Inteference



Multipath



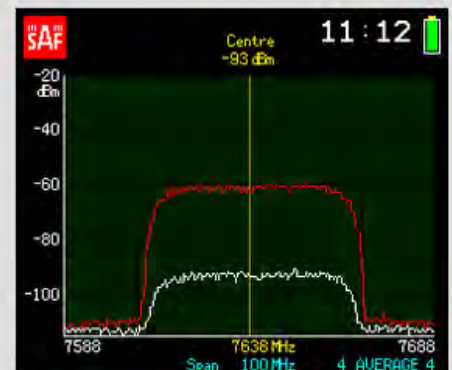
Power in band



Spectrum scan



Tx damaged



Reference mask

Spectrum Compact is the ultimate solution for site auditing from the ground level

SC users are often surprised, how easy it is to do site audits with the SC, to verify installed base of radios and if license conditions are met. It is done from the ground level by pointing a sensor antenna towards antennas on the tower. No need to climb towers or use bulky laboratory-grade equipment.

Employing Spectrum Compact enables you to perform efficient transceiver site auditing from ground level. That includes, but is not limited to:

- license parameter verification of any installed radio (channel bandwidth, center frequency, etc.)
- scanning all installed radios in a given band or across several radio bands.

SPECIFICATIONS

P/N	JOSSAP10	JOSSAP11	JOSSAP12	JOSSAP13	JOSSAP14
Frequency bands	2.4/2.5/3.6/4.9/5/6/7/8 GHz	6/7/8/10/11 GHz	10/11/13/15/17 GHz	17/18/23/24 GHz	24/26/30/32/38 GHz
Frequency range	2.000 - 8.000 GHz	5.925 - 12.000 GHz	10.000 - 18.000 GHz	17.000 - 24.300 GHz	24.000 - 40.000 GHz
Input power range		-105 dBm to -40 dBm			-100 dBm to -40 dBm
Max input power		0 dBm			0 dBm
RBW (Resolution bandwidth)		1 MHz			1 MHz
Span		100 MHz to full bandwidth			100 MHz to full bandwidth
Sweep speed		0.5s @ 100MHz Span			0.5s @ 100MHz Span
Guaranteed accuracy		+/- 3dB			+/- 3dB
Input		50 ohm SMA (f)			50 ohm 2.92 mm (f)
Interface		mini USB 2.0 (1.1)			mini USB 2.0 (1.1)
LED indication		when charging			when charging
Battery		2380 mAh Polymer Lithium-ion			2 x 2380 mAh Polymer Lithium-ion
Battery life		up to 4h			up to 3h
Operating temperature		-15°C to +55°C/ 5°F to 131°F			-15°C to +55°C/ 5°F to 131°F
Dimensions		128x81x24 mm/			130x81x28 mm/
Weight		0.3 kg			0.4 kg

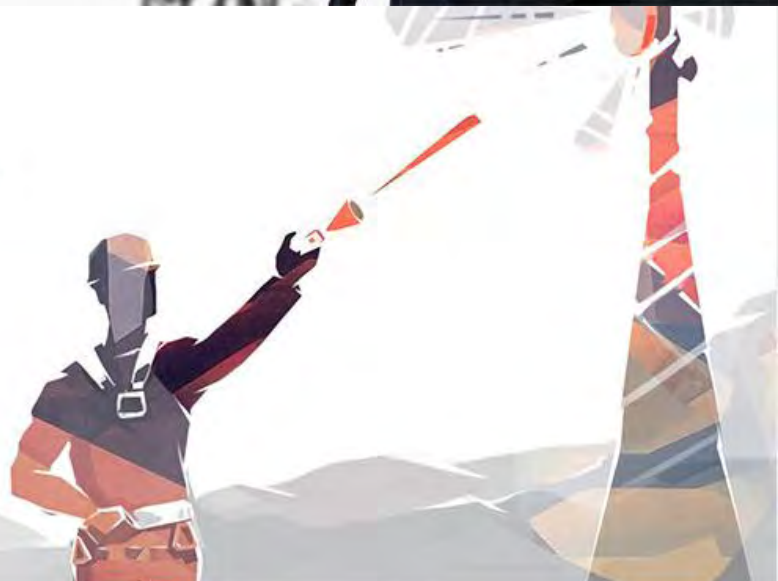
Solutions for Radio Frequency Regulatory Authorities



The product has been specifically designed for use by field engineers, regulatory authorities, installers and integrators. It is a convenient tool for installed radio verification, to separate radio users who follow their license conditions from illegal spectrum users. Several other important applications of the Spectrum Compact include interference detection and analysis, which are facilitated by an industry-unique feature set of the SC: prominent receiver sensitivity, small hand-held form factor, small weight, a convenient touch screen LCD display and a wide selection of application-specific accessories. Free PC software makes saved spectrum scan management and analysis fast and easy.

Interference Detection

The Spectrum Compact ensures interference detection within seconds by simply pointing the device in the direction of the far side of a radiolink. This can be done without interrupting link traffic. Sometimes weak link performance is caused by mismatched antenna polarizations – a small but disruptive mistake that can be detected and fixed within a few minutes by using SAF Spectrum Compact.



Accessories



Conical horn antennas



Attenuator kit, 60 dB



Antenna set in case



Riflescope and tripod

Spectrum Compact kit



Spectrum Compact 2 - 8 GHz



Spectrum Compact 6 - 12 GHz



Spectrum Compact 10 - 18 GHz



Spectrum Compact 17 - 24 GHz



Spectrum Compact 6 - 12 GHz



Spectrum Compact 10 - 18 GHz



Spectrum Compact 17 - 24 GHz



Spectrum Compact 24 - 40 GHz



1



3



5



2



6



7



8



9



10



11



12

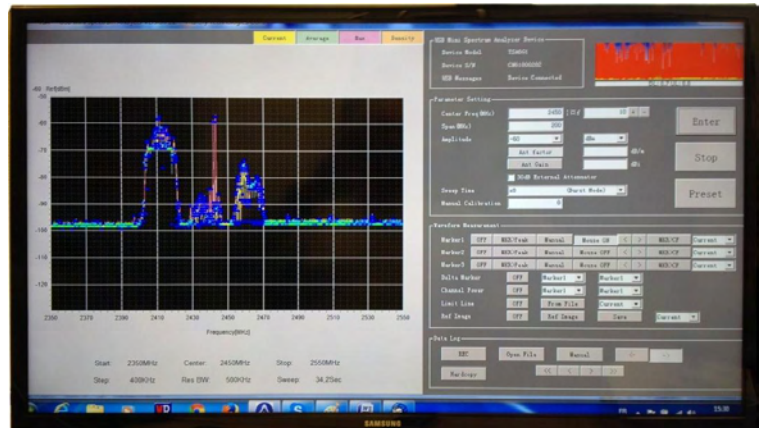


- (1) Leather bag (2) Quick start guide (3) RF SMA cable (4) a set of five Spectrum Compact units (5) USB cable (6) Lanyard (7) SMA F to N-type M adapter (8) N-type Female to Female adapter (9) SMA F to RP-SMA M (10) SMA F to RP-SMA F (11) Six different waveguide adapters (12) AC/DC USB charger



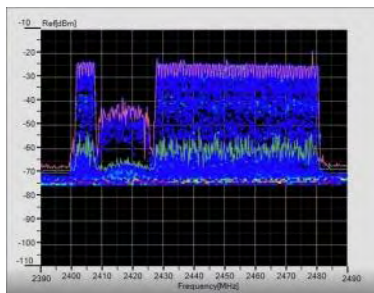
(1) Tripod for antennas (2) Horn antenna 5.9-11GHz (3) Horn antenna 11-17GHz (4) Horn antenna 17-26GHz (5) Horn antenna 26-40GHz (6) Simple pole mount for horn antennas (7) 4x32WR Riflescope for horn antennas

HYC/TSA6G1 USB Mini Spectrum Analyzer

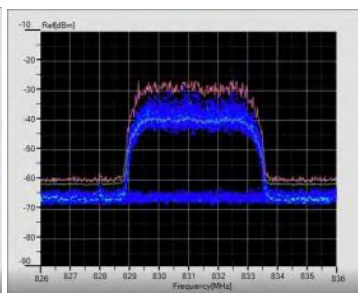


Specifications:

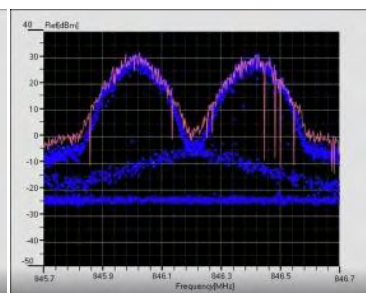
- ◆ Frequency Range: Band1: 1MHz to 5.35GHz, Band2: 5.35GHz to 6.15GHz
- ◆ Frequency Spans: 1MHz to 1000 MHz
- ◆ Input Level Range: -110 dBm to +30 dBm
- ◆ Dimensions: 87.5mm x 23mm x 15mm (L x W x H)



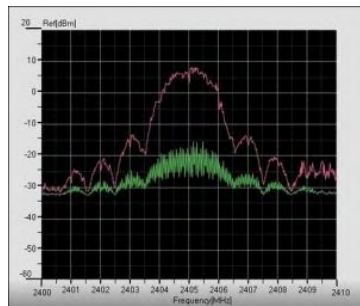
Onde Bluetooth



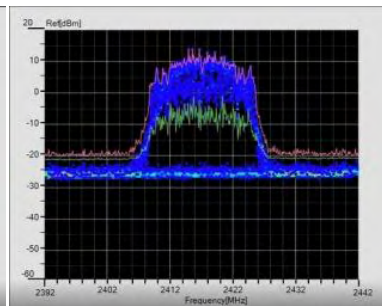
Onde 3-G



Onde GSM



Onde Zigbee



Onde WiFi

Applications:

- ◆ FM radio
- ◆ Two way radio
- ◆ TV application
- ◆ Remote controller
- ◆ Cellular and PCS, CDMA and GSM, GPRS, Edge, WCDMA and 3G, LTE.
- ◆ 915MHz, 2.4G ISM band application.
- ◆ 5.8G ISM band application
- ◆ Bluetooth
- ◆ WiFi
- ◆ WiMax
- ◆ Field test and installation
- ◆ ATE system
- ◆ Near field testing and EMC

Accessoires de base pour le raccordement aux antennes de test.



- ◆ 1502 Cordon sur mesure en coax CNT-195 Ø 5mm Longueur 1 mètre
Connecteur A N-Mâle
Connecteur B SMA Mâle



- ◆ 1100 Adaptateur N-Femelle vers N-Femelle

- ◆ Atténuateur 30 dB

- ◆ Cordon USB femelle/USB Mâle

- ◆ CD manuel et Licence d'usage

■ *Autres adaptateurs, câbles et antennes sur demande*

USB Mini Spectrum Analyzer User Manual

PC program TSA For
HYC-TSA5G35, HYC-TSA4G1, HYC-TSA6G1, HYC-TSA12G5



1 Getting Started

1.1 Install PC Application

System Requirements:

To use this USB mini spectrum analyzer, your system must meet the following minimum requirements:

Windows XP, Windows 7, or Windows Vista and Window 8:

- 1 Gigahertz (GHz) or faster 32-bit (x86) or [64-bit \(x64\)](#) processor
- 1 Gigabyte (GB) RAM (32-bit) or 2 GB RAM (64-bit)
- 100 MB hard disk space (Buffered data may need extra space)
- Display resolution shall be better than 1024x768

Insert CD into the computer, open the **SW_file/TSA** folder from CD, and click the setup.exe to install software. When you see the installation window, click "Next". Please see **Figure 1**



Figure 1 Installation View

Follow the installation instruction to install the PC program.

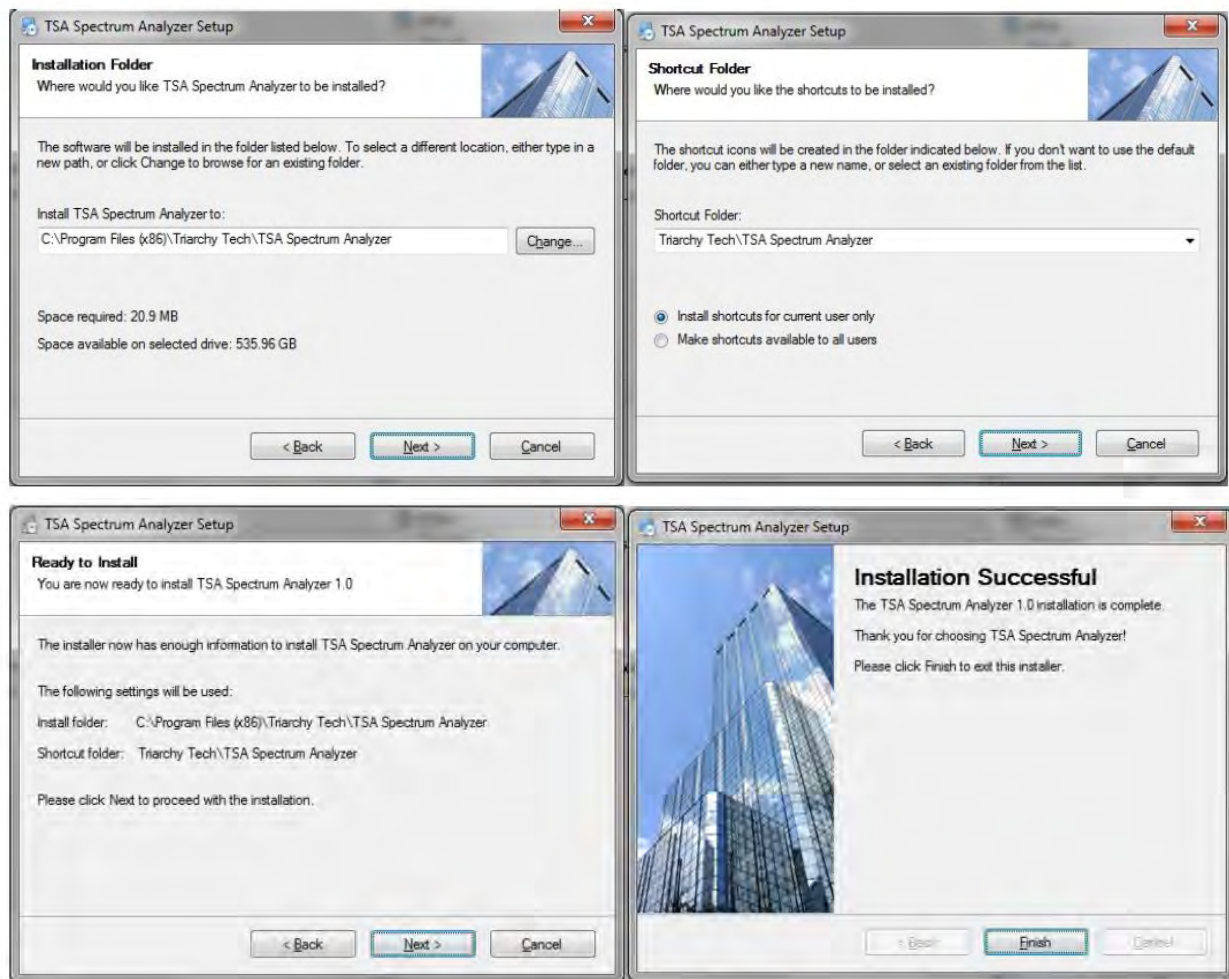


Figure 2 Successfully Installed

After the program is successfully installed, you will get the message “Finish the Installation Completely”, please see **Figure 2**,

TSA program will install at **C:\Program Files (x86)\Triarchy Tech\TSA Spectrum Analyzer**

TSA data folder will be located at Documents, all the log data and Calibration file will put into data folder, the data folder path is **C:\Users\UserName\Documents\Triarchy Tech\TSA Spectrum Analyzer**.

Please see **Figure 4**.

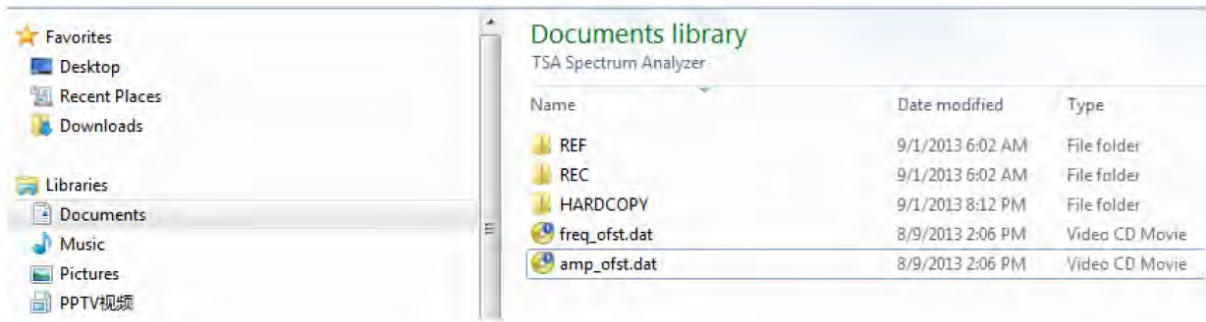


Figure 4 Data Folder View

Do not run the program right away, after you install the PC program TSA as you still need to validate the installation. To validate the installation, please copy the calibration file of **amp_ofst.dat** and **freq_ofst.dat** from the CD to the installation folder to replace the old **amp_ofst.dat** and **freq_ofst.dat file**. The old **amp_ofst.dat** and **freq_ofst.dat file** was demo version, the calibration file in your CD will be related to your ordered device. You must copy it to replace the demo Demo version. Please request these 2 files from support@triarchytech.com if you do not have a CD.

(If your product is TSA5G35, you need to remove the **amp_ofst.dat**, then copy calibration file **lic.dat** and **freq_ofst.dat** which in your CD into the installed folder. **freq_ofst.dat** file will replace the demo version.)

(If your product is TSA5G35, you need to remove the **amp_ofst.dat**, then copy calibration file **lic.dat** and **freq_ofst.dat** which in your CD into the installed folder. **freq_ofst.dat** file will replace the demo version.)

After copying the **amp_ofst.dat** and **freq_ofst.dat** files into Data folder, you can run the program from the desktop, click the TSA icon on desktop to start the application, please see **Figure 5**.

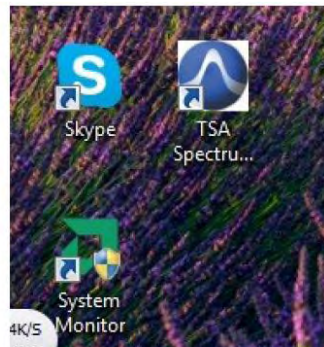


Figure 5 TSA Shortcut Icons on Desktop

*If clicking on the TSA ICON for Desktop, the “Sorry but can’t find calibration file!” warning appears, **Figure 6**. It means the **amp_ofst.dat** and **freq_ofst .dat file** from CD is missing in the data folder.

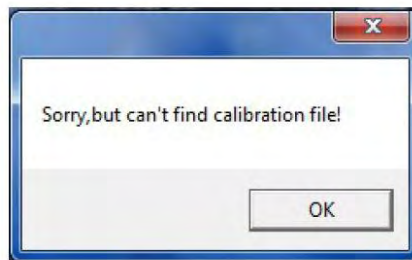


Figure 6 Needs to copy Calibration file

If the installation was successful, you will see spectrum analyzer application start-up window as shown in **Figure 7**.

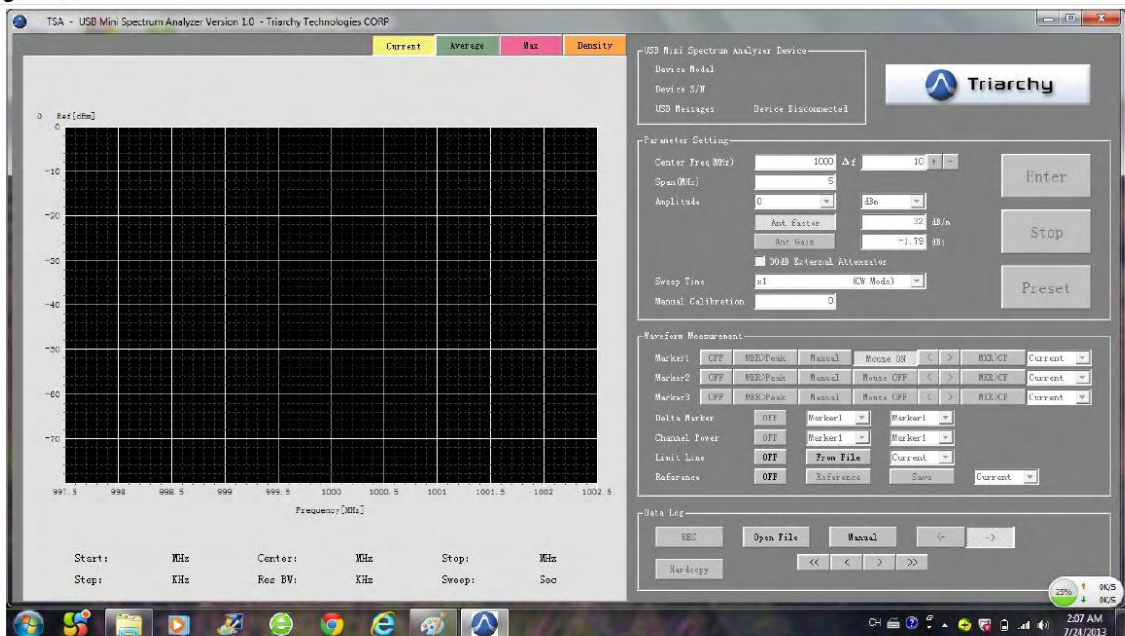


Figure 7 Application Windows before USB Device Connected

Plug the **TSAGx USB mini spectrum analyzer** into the PC USB port, the program will recognize the USB device and displays Device model and Device S/N. If PC connects to USB device properly, the USB Message is shown Device Connected. Please see **Figure 7**

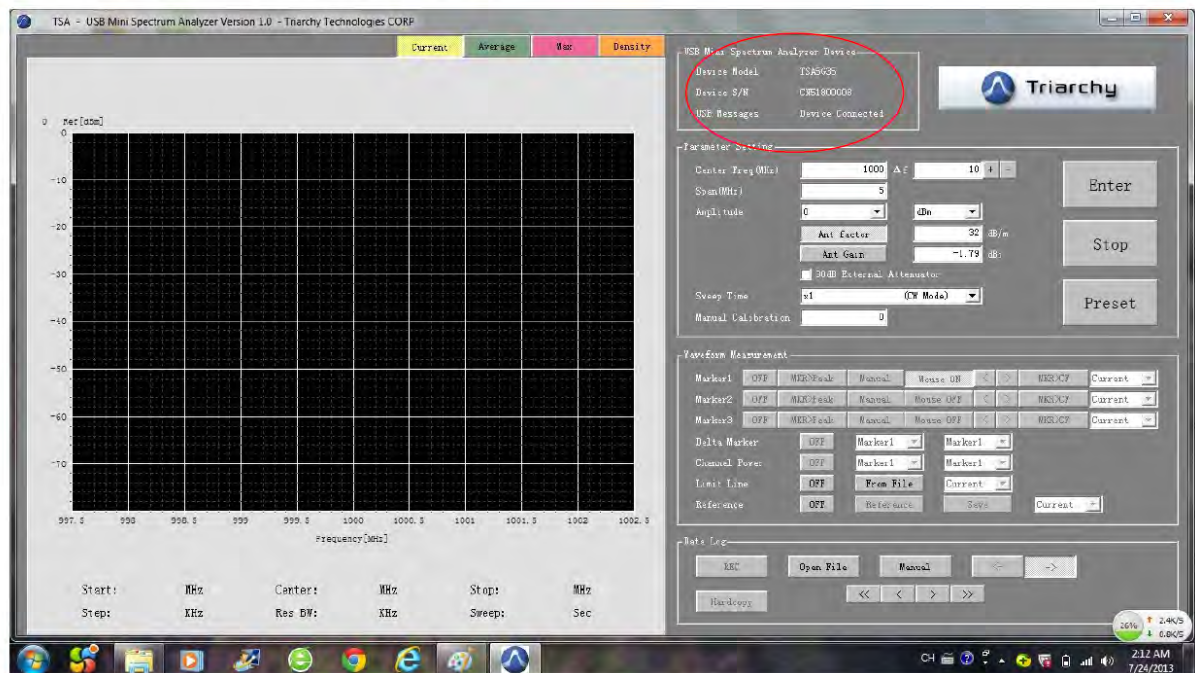


Figure 7 TSA Connected with USB Mini Spectrum Analyzer Device

1.2 Uninstall PC Application:

If you want to uninstall the TSA program, please go to the Start menu, look for the Triarchy Tech folder, then click Uninstall item and follow the instruction. Please see **Figure 8**.

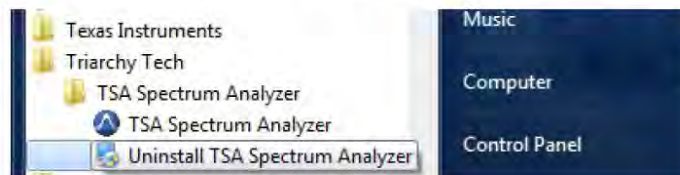


Figure 8 Uninstall View

1.3 System Connection

Figure 9 shows the system connection. TSAxGx connects to the computer through the USB port. The connection between TSAxGx and RF signal generator can be wired via coaxial cable or wireless via antenna. The RF signal generator could be any RF transmission device.



Figure 9 System Connection

2. Operations

2.1 Parameters Setting

When the application starts, the screen displays as shown in **Figure 10**. The default span is 5 MHz, the default reference level is 0 dBm, and the center frequency is 1000MHz.

When a signal presents at the input, the signal spectrum will be displayed. In this example, the signal center is at 1000 MHz. The spectrum display by default shows only the current trace. The average trace, peak trace, and density of the signal level are turned off. If you want to turn on different traces, you can enable different traces by clicking tabs to display.

If you want to change the setting, input value at each block, then click enter key. Stop button is used to stop scanning. When updating a new setting, click enter without clicking the Stop key.

The preset key will push the setting to the default value. That is 1000MHz for freq, 5MHz for SPAN, 0dBm for Amplitude, current display only.

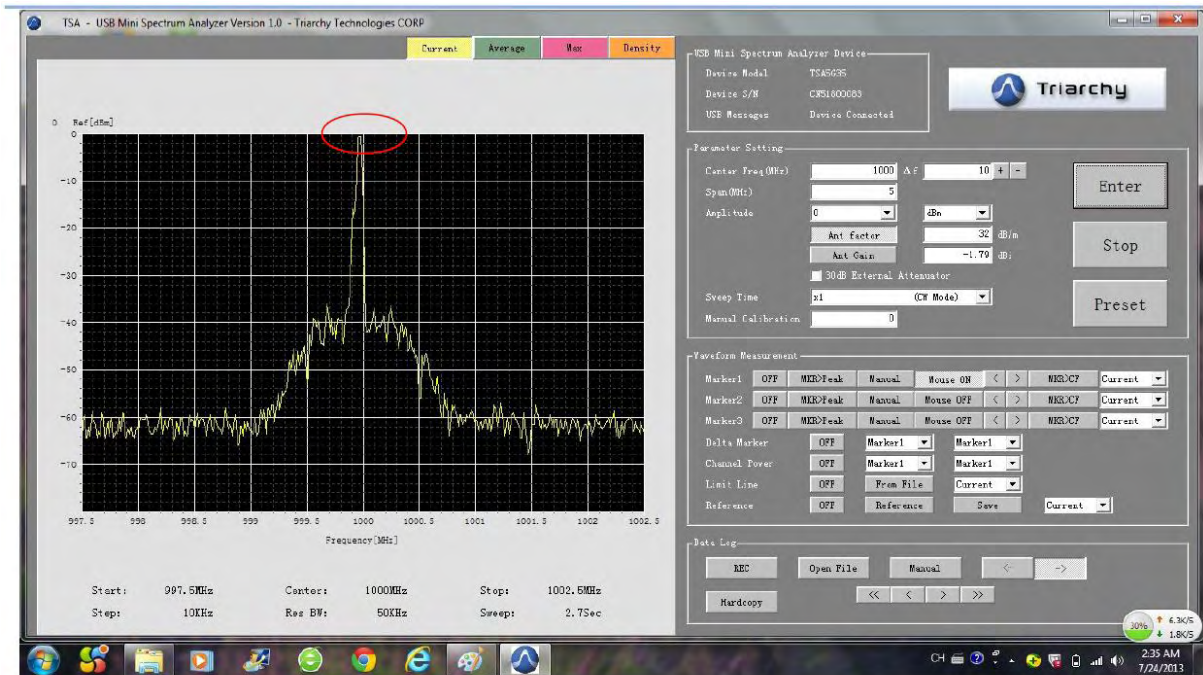


Figure 10 Spectrum Display with Signal Default value

2.2 Frequency Setting

The center frequency is entered into **Center-freq(MHz)** input. Then the **TSAGx** will scan from $\text{center_freq} - \text{span}/2$ to $\text{center_freq} + \text{span}/2$. The display window will show the signal spectrum after clicking the ENTER button. The valid center frequency range is from 1 MHz to 5350 MHz for TSA5G35 model. If TSA program is connected to another model such as TSA12G5, the frequency range will be 4.9GHz to 13.5GHz, please check each model datasheet for detail.

Frequency setting also has step setting function, setup step value, click + or - to implement next measurement, and it didn't need to click the ENTER key.

2.3 SPAN Setting

The SPAN value can be input by user. SPAN values range will be 1~1000MHz, unit is MHz, and only integer value.

The TSA5G35 has two bands, low band is from 1 to 850 MHz and high band from 850 MHz to 5350 MHz. The 850 MHz frequency is the band edge. When SPAN is set at 101 MHz to 1000 MHz, SPAN range cannot cross over the band edge, so that, 1000 MHz SPAN cannot work at low band.

When SPAN setting is from 1 MHz to 100 MHz, the span range can cross over the 850 MHz band edge.

For example, if SPAN is set to 500 MHz, the frequency is set at 600 MHz; the SPAN range will be from 350 MHz to 850 MHz. If the frequency is set to 700 MHz, the SPAN range is still keep at 350MHz, the TSA will pop up the warning message to remind the user to enter a proper value for the span.

TSA6G1, TSA8G1 and TSA12G5 has band 1 and band 2, Band1 of TSA6G1 and TSA8G1 has same function of TSA5G35, it still need to take care of 850MHz band edge issue.

The SPAN setting can not cross over the band1 and band2 in the TSA6G1, TSA8G1 and TSA12G5.

2.4 Amplitude Setting

The amplitude setting will depend on the signal level to be measured. If the signal is small, the 30 dB attenuator doesn't need to be added, the reference level will be from -60 dBm to 0 dBm at 10 dB step. If the large signal is to be measured, the 30 dB attenuator will need to be added, and to mark **external ATT (30 dB)** at TSA panel. The reference level will be from -30 dBm to 30dBm at 10 dB step.

The reference level in the band 2 in TSA6G1 and TSA8G1 will shift 20dB, please check the datasheet.

The reference level in the TSA12G5 without external ATT will be 40dB range, please check the datasheet for detail.

The amplitude the unit can be set to dBm, dBuv, dBm, dBuv/m, dBm/m2.

When you select dBuv/m, and dbm/m2. It means to use USB spectrum analyzer to measure the field strength, it will be related to the antenna parameter: antenna factor or antenna gain. You shall input antenna parameter. These parameters are related to the frequency, you shall choice proper parameter at your application band.

2.5 Sweep Time Setting

When the sweep time is slow, the **TSA5G35** will do oversampling. The oversampling time interval will be 3us. The sweep time needs to be selected based on what kind of signal will be measured.

If the signal to be measured is continuous wave (CW), select x1 (CW Mode).

If the signal to be measured is continuous modulation signal, select x1.5 (Burst Mode)

If the signal to be measured is packet data signal, select x2(Burst Mode) or x4(Burst Mode), or larger.

2.6 Trace Selection

The current trace, average trace, max trace, and density of the measured signal can be turned on or off individually by clicking on the corresponding button on the screen as shown in **Figure 11**, which shows that current trace and density are turned on. Average trace, and max trace are turn off

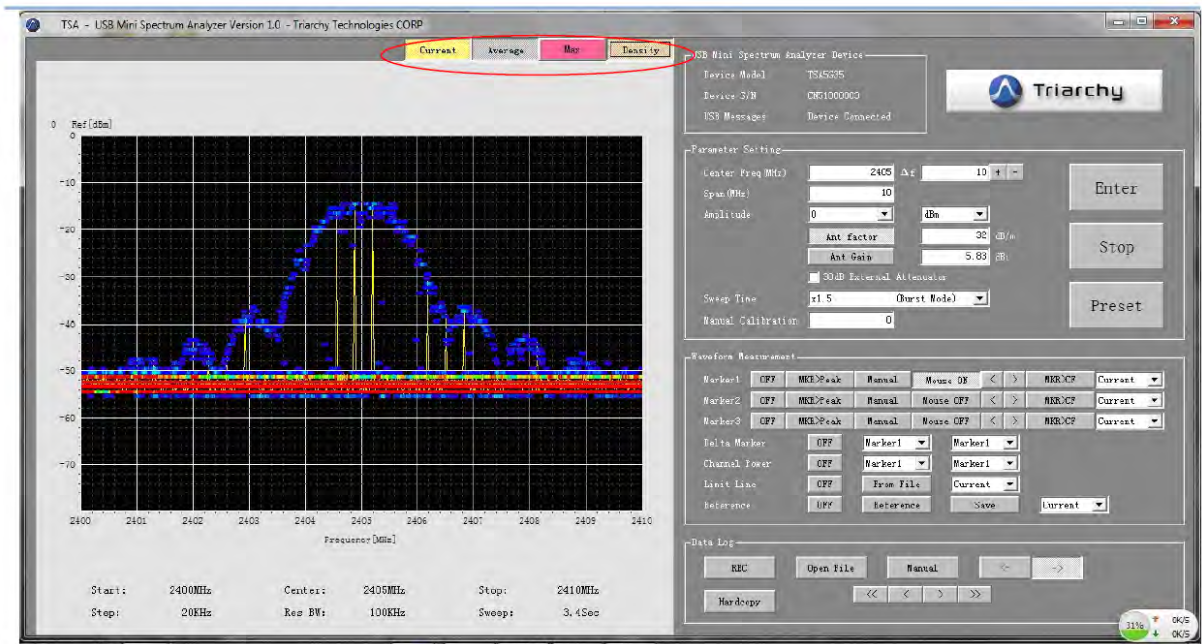


Figure 11 Current Trace and Density Trace are Turned on

2.7 Current Trace

The current trace is to display the real time signal spectrum, and the default display will be current trace. The current trace will be updated with each scan over the frequency range. When the input signal is changed, the current trace will change immediately. When the device is used to measure the modulated signal and packet signal, you need to increase the sweep time to get a better spectrum waveform.

2.8 Average Trace

The average trace is adopted 16 points of moving average algorithm. It can reduce the signal noise when measuring CW signal. It will conjecture the signal repeat rate for modulated or packet signal measurement, if the average trace is very low comparing to the max trace, it means the signal repeat rate is very low.

2.9 Max Trace

The max trace will hold the maximum signal level with each scan. Max trace can be used to measure the modulated signals, and random signals. The max trace will show envelop of modulated signals. When you do an EMC test, you can use the max trace to pick up the max signal.

2.10 Density Measurement

The density image will show the modulated signal with the detailed signal energy distribution, even when two signals are overlapped, you can still watch and find the two signals from the density image. It is very useful to analyze the modulated signal.

Since density measurement will use up a lot PC computing resource, the default option for density measurement is off. For a low performance PC, turning on this option may cause PC to respond slowly.

2.11 Manual Calibration

Input one value, the waveform will be up and down to follow the input value.

If external attenuator is used (not 30dB), Manual calibration will be compensated the attenuation value.

If connection cable have large insertion loss, Manual calibration will be compensated the attenuation value.

Manual calibration is temporarily solution for customer to adjust signal level. It shall put into "0" when you don't use this feature.

3. Measurement Support Features

There are measurement support features, including **Marker**, **Delta marker**, **Channel power**, **Limit line**, **Reference trace**, **Recording**, and **Image Hardcopy**.

3.1 Select Measurement Curve

When selecting **Measurement** functions, you shall choose which curve to be measured. There are **Current**, **Average** and **Max** curves, please select one in **Select Curves** window. The **Select Curve** windows are located last item of each function in the waveform measure.

3.2 Marker

Three are total three marker can be used:

ON/OFF, turn on and turn off the marker

MKR>PEAK, force the marker to max signal point after marker is turn on.

Manual/Auto, setting will continue to trace the marker to peak point, and Manual one time searches the peak point after click the MKR>PRAK.

Mouser On/Off, if mouse on is selected, marker will be moving by mouse cursor, mouse cursor must be located at curve, and click it, then the marker can be moved, it is easy way to move the marker. There are total three Mouse On/Off keys; only one key can be turn on.

< left moving key, click it, marker will left moving.

> Right moving key, click it, marker will right moving.

MRK>CF, click it, the marker will be used as center frequency to do new measurement.

Figure 12 shows the marker function.

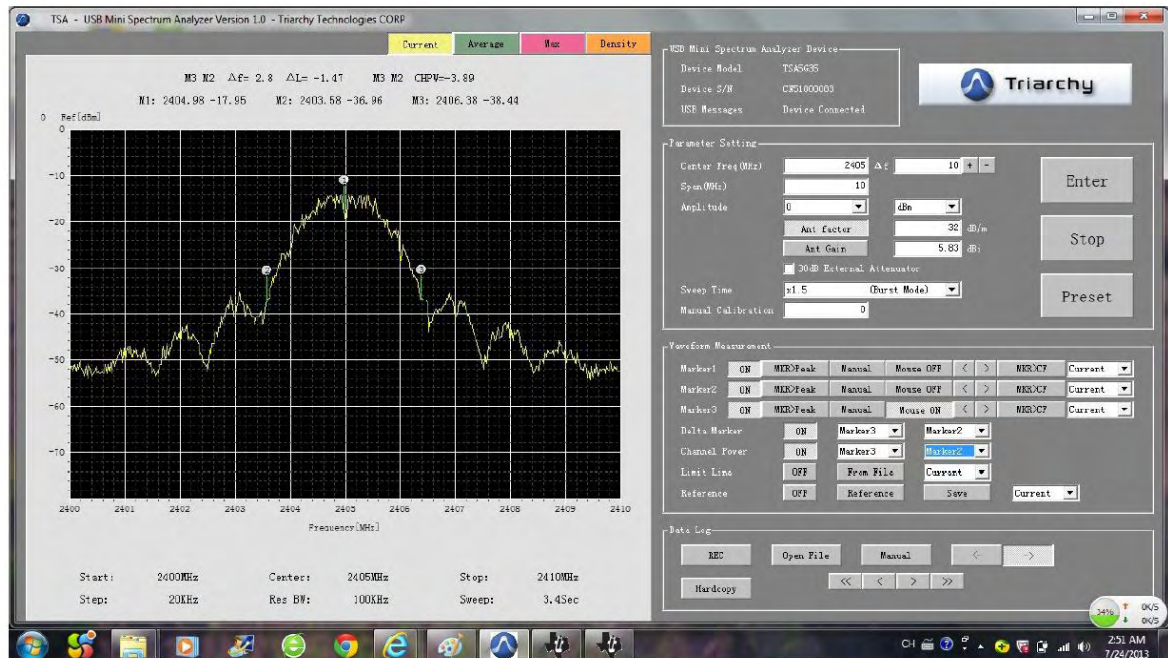


Figure 12 Marker, Delta Marker, Channel power

3.3 Delta maker

First, it needs to turn on more than two markers. Moving the marker to the proper the location.

Select two markers to do Delta marker function.

A lot parameter can be measured by properly setting the maker position such as BW, dBc,

3.4 Channel power

Select two points of markers to do channel power calculation, it is more useful to measure the modulation signal.

You can measure the main channel power; also can measure the adjacent channel power by setting different marker location. Then you can calculate the ACPR (adjacent channel power ratio)

3.5 Limit line

The limit line will be used in the production line, if the signal larger than limit line, it will show PASS, if the signal is smaller than limit line, it will show FAIL.

The limit line will load from Excel file which will define the limit line template, it will be total 501 point data at first column of excel file; customer can define any kind of template by writing the Excel data. The file will save at **C:\Users\Username\Documents\Triarchy Tech\TSA Spectrum Analyzer\REF**

3.6 Reference

The reference function will capture any waveform as reference image to shown on the display. The reference also can be saved as file. The limit line function can load this file and show up. The reference can be used for comparing the measurement. Please see **Figure 13**. The reference curve is Zigbee signal with continually modulation, and current is shown the burst modulation of Zigbee signal.

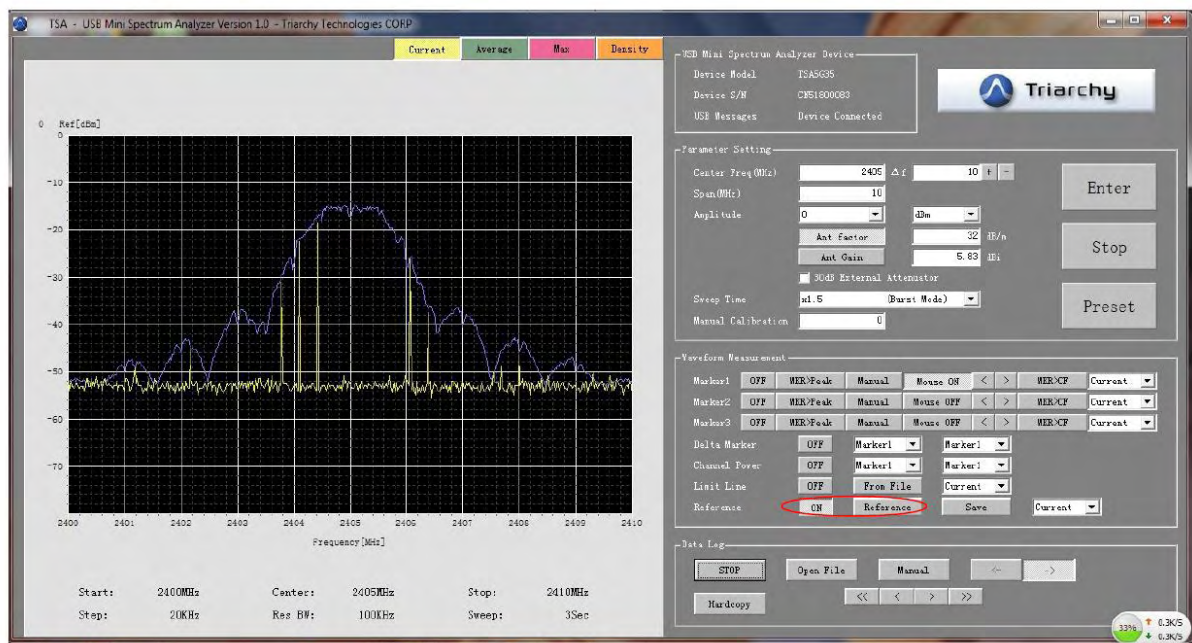


Figure 13 Reference on Display

3.7 Hardcopy

Xclick the hardcopy key, the waveform image and data will be hardcopy into HARDCOPY folder

C:\Users\UserName\Documents\Triarchy Tech\TSA Spectrum Analyzer\HARDCOPY. There are total four files generated, one is JPG image file, and three Excel data file which related to the current, Average and MAX.

3.8 Recording

Click the REC key the waveform can be recording, the record information will be saved as file at

C:\Users\UserName\Documents\Triarchy Tech\TSA Spectrum Analyzer\HARDCOPY

Click stop to save the record file and stop the recording.

The record can be reviewed by loading file.

The record has two modes to review: Manual and Auto.

Manual: click < or > to move one frame to view. Click << or >> to move block of frame to view.

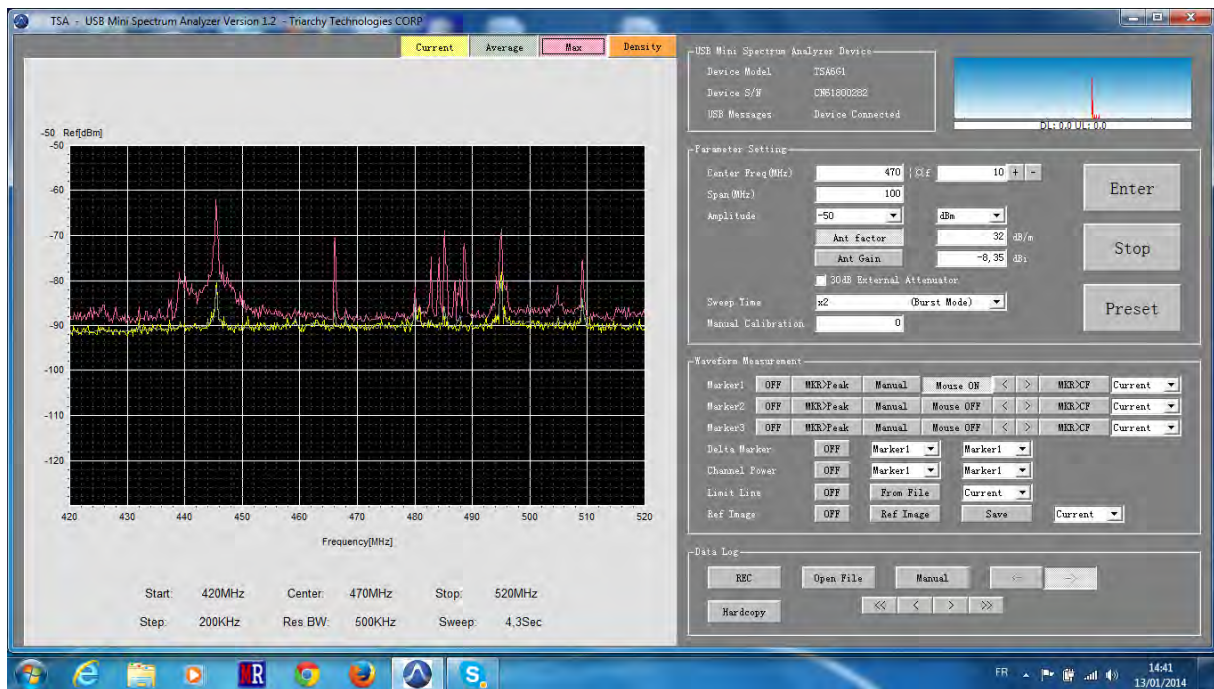
Auto: -> is normal play, <- is back play.

3.9 Display moving

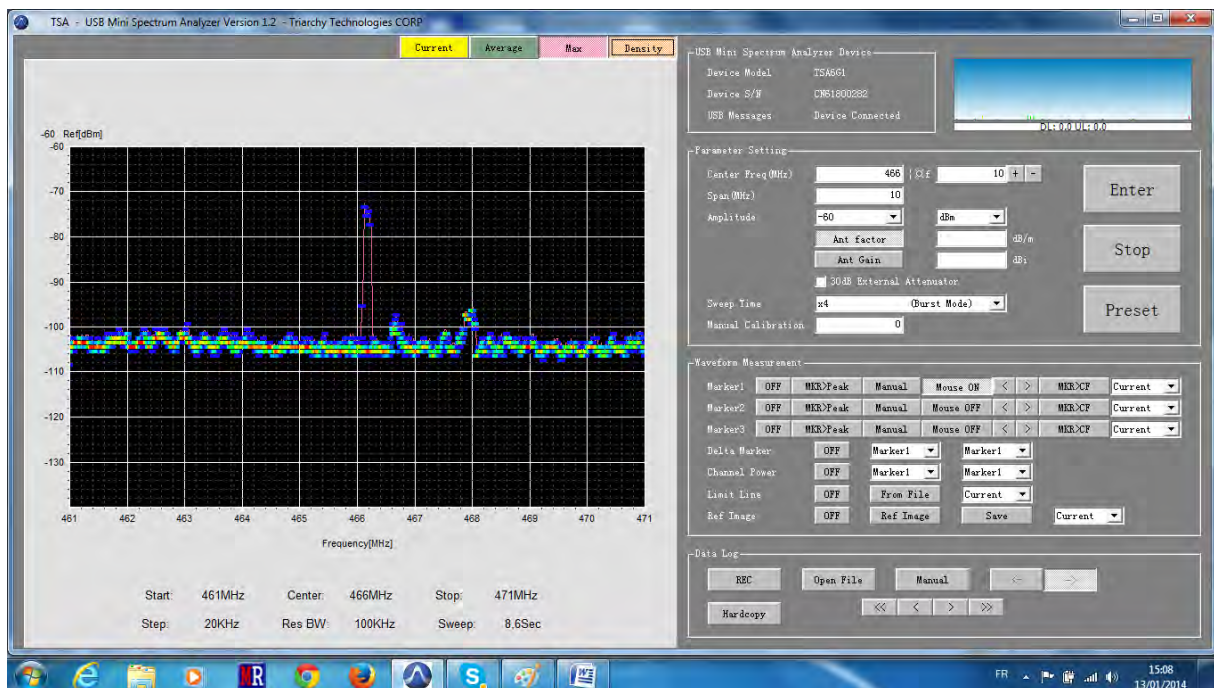
Right click the mouse key when mouse cursor in the display area, then moving the roll on the mouse, the waveform of display can be scrolled up and down.

Immunity:

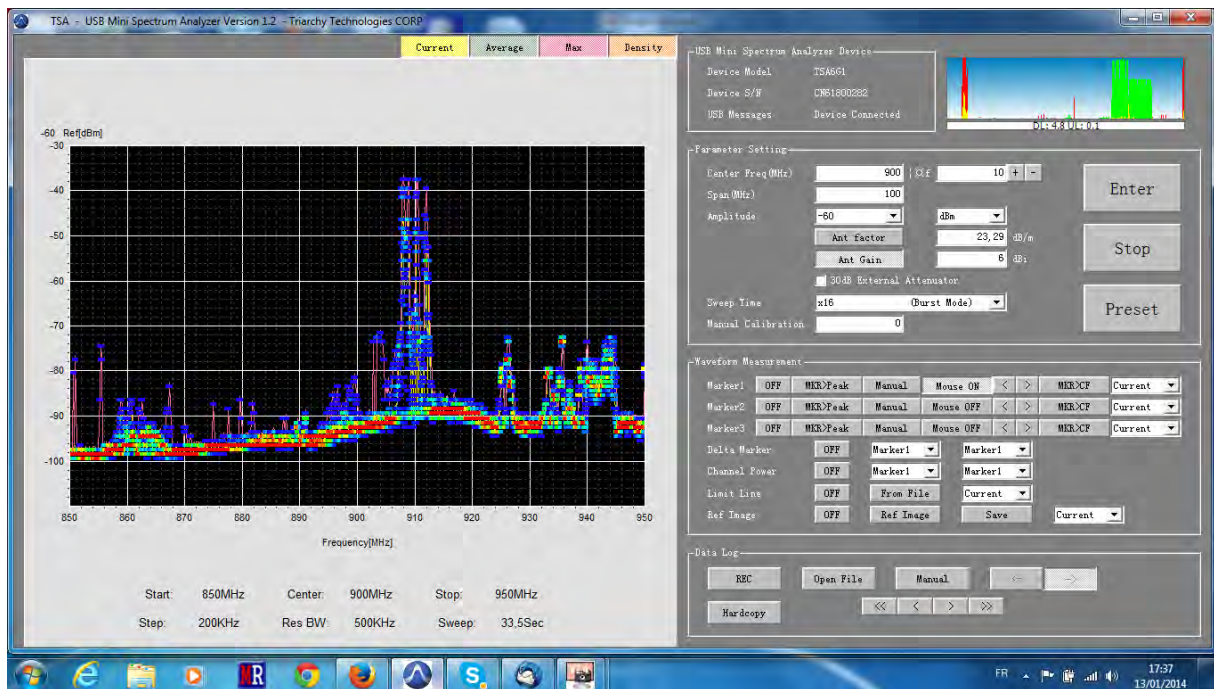
EN 61326-1:2006/EN61000-4-2	Electrostatic Discharge
EN 61326-1:2006/EN61000-4-3	Radiated Immunity
EN 61326-1:2006/EN61000-4-4	Electrical Fast Transients
EN 61326-1:2006/EN61000-4-6	Conducted Immunity



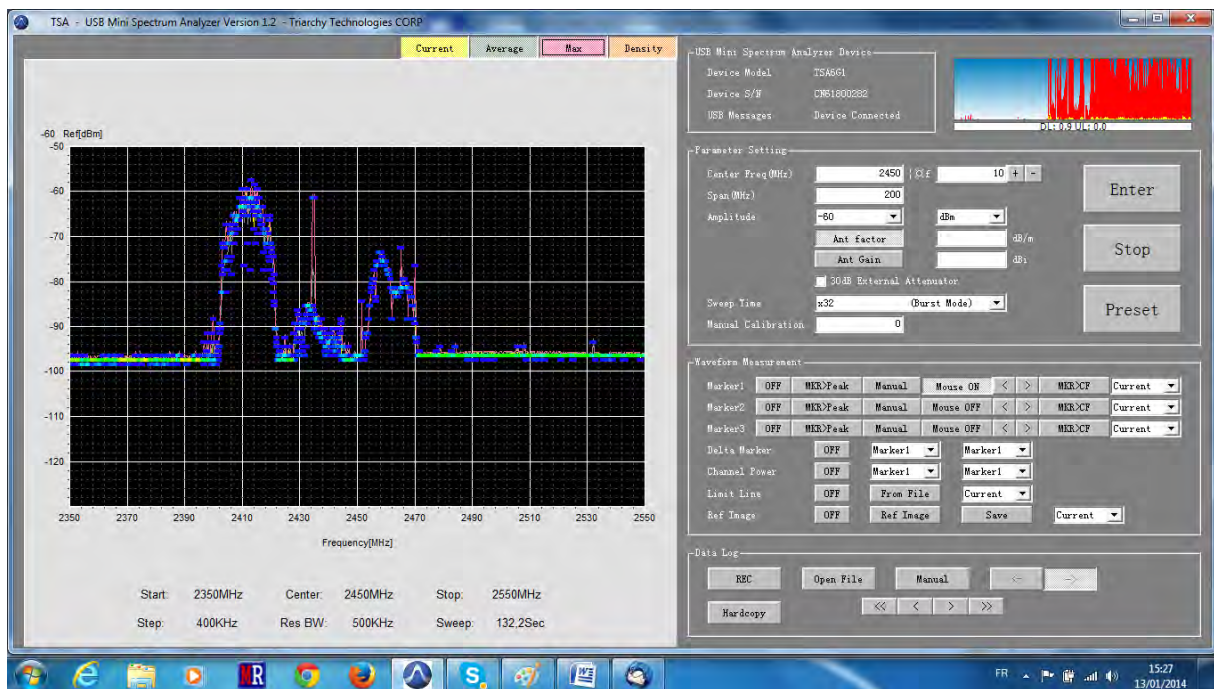
Analyses de 420 MHz à 520 Mhz tracé des niveaux de base et tracé des niveaux crêtes



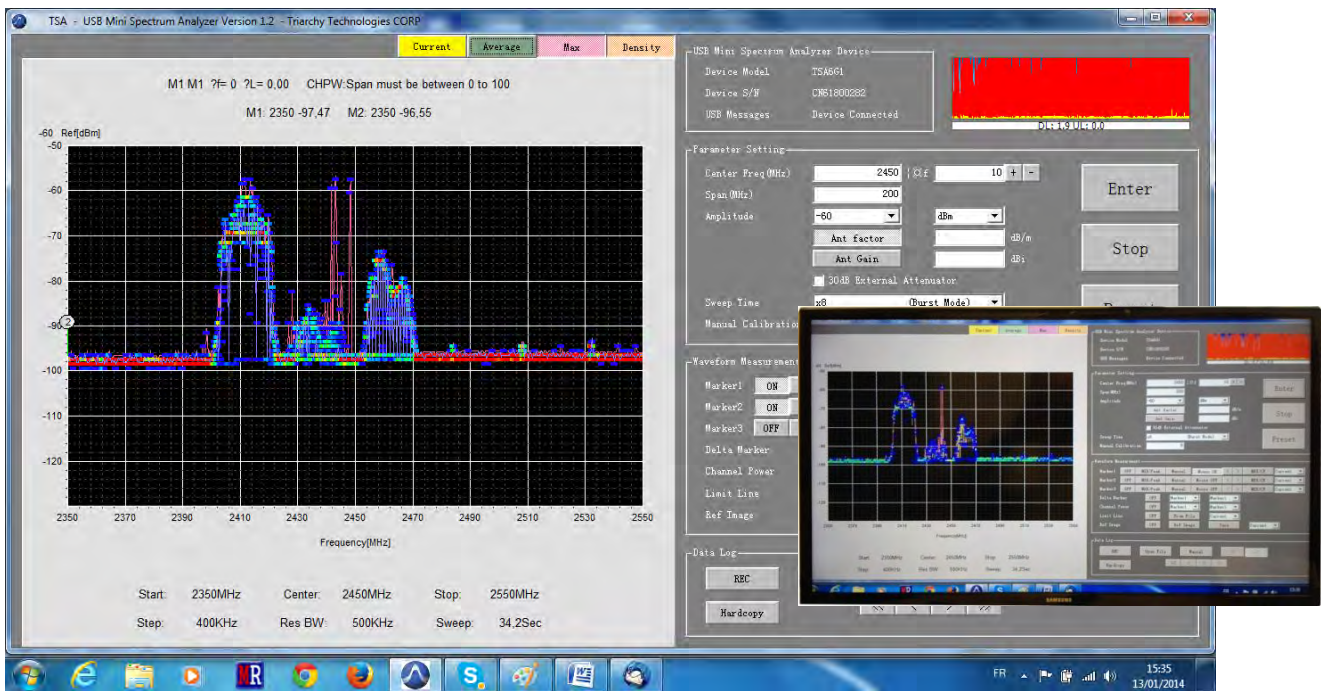
Porteuses de réseau PMR 466.103 a 466.199 MHz avec marqueurs de densité



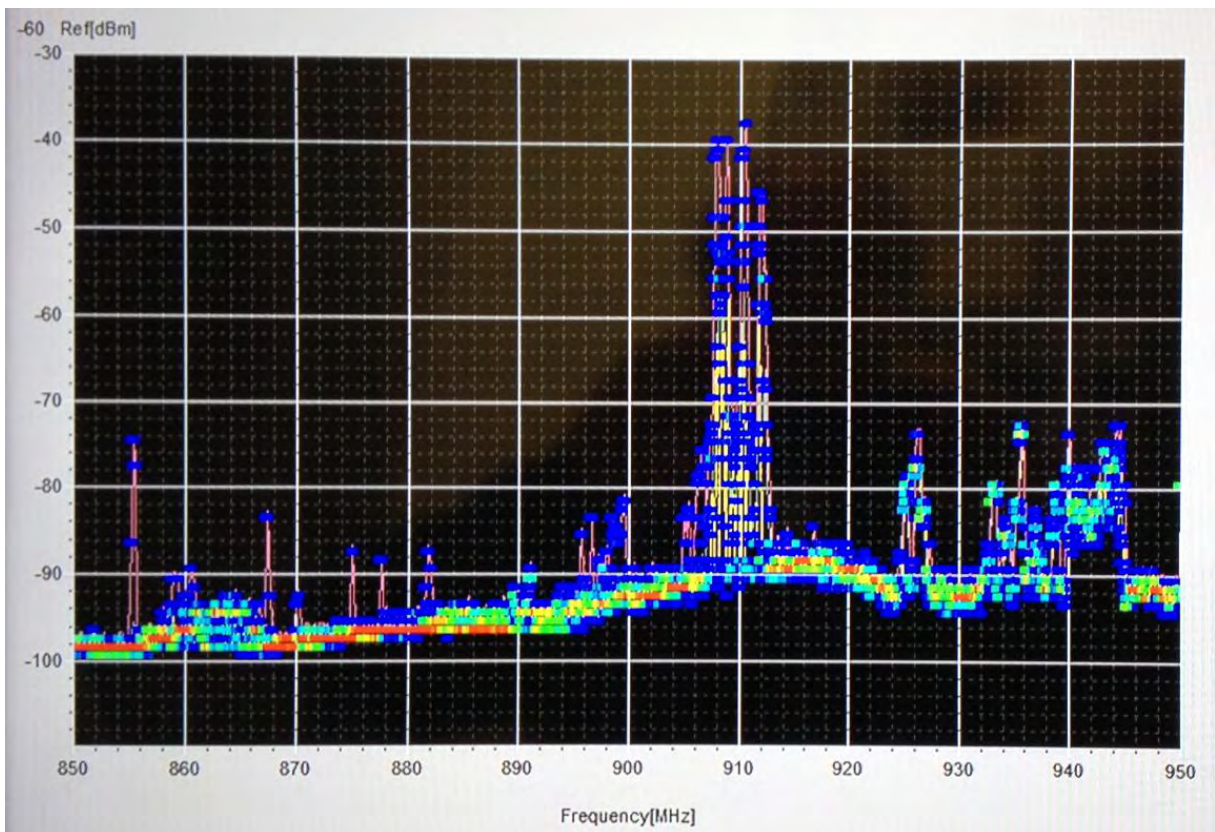
Analyses LTE 4 G – SRD et GSM de 850 MHz à 950 Mhz avec marqueurs de densité



Analyses 2.350 MHz à 2.550 Mhz avec marqueurs de densité occupation WiFi de 2.400 à 2.470 MHz



Analyses 2.350 MHz à 2.550 Mhz avec marqueurs de densité occupation WiFi de 2.400 à 2.470 MHz



Sortie HDMI sur écran TV HD